



700 Marsolais Street
L'Assomption, Quebec
Canada J5W 2G9
Tel: (450) 589-1063
or 1-800-267-8243
Fax: (450) 589-1711
www.stageline.com
info@stageline.com

Stageline SAM 550

A thorough understanding of the inter-related loadings shown in this rigging plan is needed in order to safely use this mobile stage roof and to take full advantage of the many rigging opportunities it offers.

This mobile stage roof offers a variety of rigging options with regard to load capacity, placement and type.

There are trusses, rigging pipes, front overhang rigging pipes, side overhang rigging beams, line array rigging beams and roof rigging points.

This rigging plan locates and defines these rigging features, includes load capacity for each and describes maximum combinations of loads amongst features.

Take note of exclusions, maximum sub-totals in a group, load balance requirements, maximum lifting capacity of roof and maximum rigging load on roof.

The maximum load on the roof is less than the sum of the maximum load on each rigging feature.

RIGGING RESTRICTIONS

Use both P1s, P2s, P3s, P4s or P5 alone.

Use all P18s or both P19s.

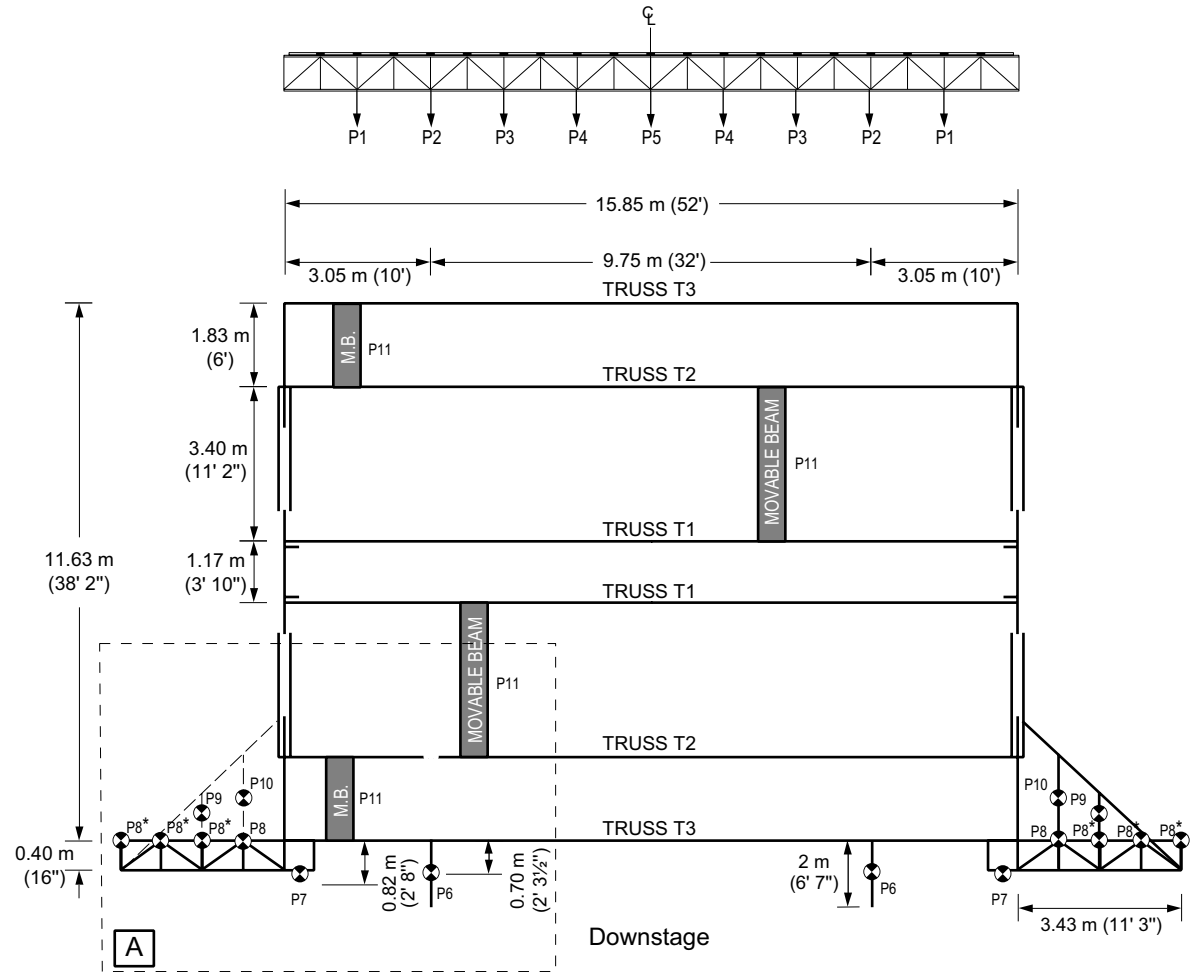
The sum of all rigging points shown in area A of both sides of roof panels cannot exceed 4090 kg (9000 lbs).

Total load on P8s must not exceed 2995 kg (6600 lbs) per side and not exceed 2722 kg (6000 lbs) if using only P8*s.

Total load on downstage T3 and P7s must not exceed 2000 kg (4400 lbs).

Total load on P9 or P10 must not exceed 1814 kg (4000 lbs) per side on 1 or 2 points.

No additional load can be rigged on side overhang truss when line array system is being used.



MAXIMUM LOAD BEARING CAPACITY: 10910 kg (24000 lbs)

Notes:

Outside diameter of rigging bars and of lower chord of trusses is 5 cm (2").

Distance between each lower chord node on T1s, T2s and T3s is 1.36 m (4' 6").

Distance between each lower chord node on Side Overhang Truss is 0.86 m (2' 9½").

Line array beam (Option) can be positioned at 0.76m (2' 6") or at 1.52 m (5') from roof extension panel. Shortest beam is 0.98 m (3' 2") long and longest is 1.72 m (5' 8").

MAXIMUM LOAD CAPACITY		
Point No.	Kg	Lbs
P9 & P10	1814	4000
P1, P2, P7, P8 & P11	1000	2200
P3 & P5	680	1500
P4 & P6	454	1000

Rigging Plan